

WORK and PLAY

BY FOREST RIVER, INC.

1/2 TON TOWABLE

ULTRA LITE

Travel Trailers & Fifth Wheel Cargo Carriers with Living Quarters.



Forest River, Inc. 3010 College Avenue, Goshen, IN 46528
Mail: Forest River c/o Work and Play P.O. Box 3030 Ekhart, IN 46515
Phone: 574.533.5934 Fax: 574.534.8137
www.forestriverinc.com www.forestriveraccessories.com

YOUR DEALER

As Work and Play constantly strives to improve our product, all specifications listed in this informative brochure are subject to change without notice or obligation. Photos may show optional equipment which is not included in the purchase price of the unit. Review a current model on your dealer's lot today. CONSULT YOUR LOCAL DEALER FOR WARRANTY INFORMATION. LITHO: U.S.A. FOR 0585

WORK AND PLAY

16UL

MODEL

DESIGNED FOR THE SMALLER SUV'S.



(BELOW) THE KITCHEN HAS A 2 BURNER COOKTOP, 3 CUBIC FOOT REFRIGERATOR, SINGLE WELL SINK WITH COUNTER SPACE TO PREPARE MEALS.

(ABOVE) WITH THE ELECTRIC BED IN THE UP POSITION AND SOFA FOLDED, THERE IS ROOM FOR TOYS AND OTHER GEAR YOU MAY WANT TO CARRY.



(ABOVE) WITH THE OPTIONAL ELECTRIC BED AND OPTIONAL SOFA IN THE SLEEPING POSITION THERE IS ROOM FOR UP TO 4 PEOPLE.

THE BATHROOM HAS A 26" X 32" SHOWER AND STOOL.

WORK AND PLAY

19 UFB

MODEL

DESIGNED TO BE ½ TON TOWABLE.



(ABOVE) THIS MODEL FEATURES AN "L" SHAPED KITCHEN WITH 3 BURNER COOK TOP, DOUBLE WELL SINK, PLENTY OF OVER HEAD CABINETS WITH BASE CABINETS FOR STORAGE. IT ALSO FEATURES A 6 CUBIC FOOT REFRIGERATOR. WITH THE OPTIONAL SOFA AND TABLE FOLDED UP YOU HAVE ROOM FOR YOUR TOYS.

THE BATHROOM STRETCHES ACROSS THE FRONT OF THE TRAILER AND FEATURES A 26"X38" SHOWER WITH SLIDING GLASS DOOR, STOOL, VANITY AND ALSO HAS VERY ADEQUATE 38" WARDROBE.



(ABOVE) WITH THE OPTIONAL ELECTRIC BED IN THE DOWN POSITION AND OPTIONAL SOFAS FOLDED DOWN YOU HAVE ROOM FOR UP TO 6 PEOPLE.

WORK AND PLAY

25 ULA

MODEL



(ABOVE) THIS MODEL FEATURES AN "L" SHAPED KITCHEN WITH 3 BURNER COOK TOP, DOUBLE WELL SINK, PLENTY OF OVER HEAD CABINETS WITH BASE CABINETS FOR STORAGE. IT ALSO FEATURES A 6 CUBIC FOOT REFRIGERATOR. WITH THE OPTIONAL SOFA AND FLIP DINETTE FOLDED UP SO YOU HAVE ROOM FOR YOUR TOYS.



(ABOVE) WITH THE OPTIONAL SOFA AND OPTIONAL DINETTE IN THE DOWN POSITION YOU HAVE AN ADDITIONAL SLEEPING AREA IN THE CARGO SPACE.



(LEFT) THIS MODEL OFFERS A PRIVATE BEDROOM WITH 2 WARDROBES, 4 DRAWERS AND PLENTY OF OVER HEAD CABINETS.

WORK AND PLAY

21, 23, 25 UL

MODEL

THE OLDEST OF THE ULTRA LINE UP AND FAST BECOMING ONE OF THE NUMBER 1 SELLERS FOR WORK AND PLAY.



(LEFT AND BELOW) THESE MODELS HAVE A VERY LARGE SLEEPING AND BATH AREA WITH WATER CLOSET, A 35" X 35" RADIUS SHOWER WITH GLASS SLIDING DOORS, NICE MIRROR WITH VANITY AREA AND A QUEEN SIZE BED.



THIS MODEL FEATURES AN "L" SHAPED KITCHEN WITH 3 BURNER COOK TOP, DOUBLE WELL SINK, PLENTY OF OVER HEAD CABINETS WITH BASE CABINETS FOR STORAGE. IT ALSO FEATURES A 6 CUBIC FOOT REFRIGERATOR. WITH THE OPTIONAL SOFA AND FLIP DINETTE FOLDED UP YOU HAVE ROOM FOR YOUR TOYS. THE ONLY DIFFERENCE BETWEEN THE 21, 23, AND 25 MODELS IS THE SIZE OF THE CARGO AREA. ALL OTHER ASPECTS ARE THE SAME.



WORK AND PLAY

27UL

MODEL

THE 5TH WHEEL 27UL IS ½ TON TOWABLE



(LEFT) THIS FIFTH WHEEL OFFERS A QUEEN SIZE BED WITH 2 WARDROBES AND DRAWERS FOR STORAGE ALONG WITH A MIRRORED HEADBOARD WITH SHELVING, AND NIGHT STANDS ON BOTH SIDES OF THE BED.



SHOWN FROM ABOVE, THIS BATHROOM FEATURES A 35" X 35" RADIUS SHOWER WITH SLIDING GLASS DOORS.

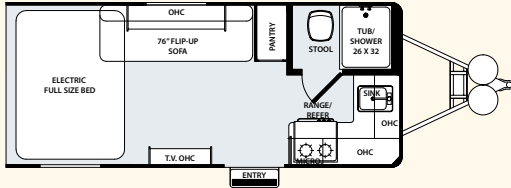


(ABOVE) THIS MODEL FEATURES AN "L" SHAPED KITCHEN WITH 3 BURNER COOK TOP, DOUBLE WELL SINK, PLENTY OF OVER HEAD CABINETS WITH BASE CABINETS FOR STORAGE. IT ALSO FEATURES A 6 CUBIC FOOT REFRIGERATOR. WITH THE OPTIONAL SOFA AND FLIP DINETTE FOLDED UP SO YOU HAVE ADEQUATE STORAGE SPACE TO BRING YOUR TOYS WITH YOU.

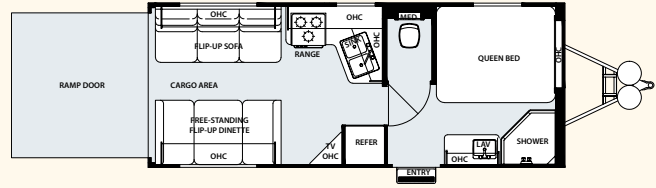
WORK AND PLAY

Floorplans and Specifications

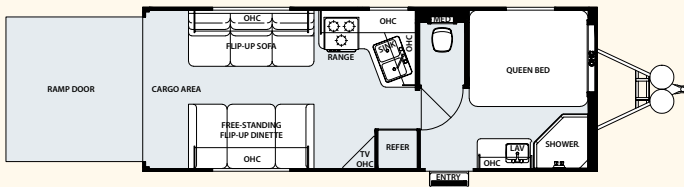
16 UL



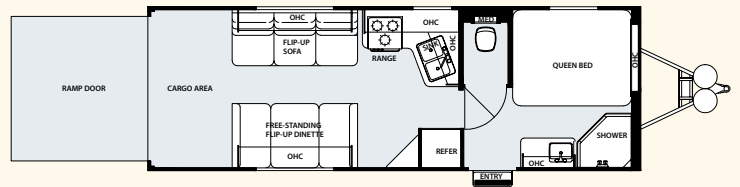
21 UL



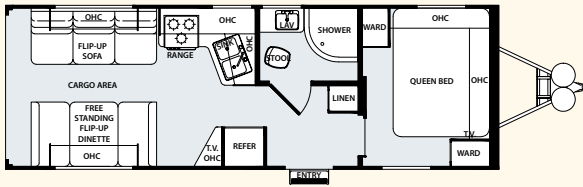
23 UL



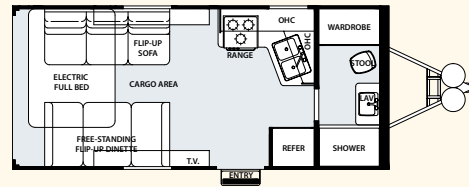
25 UL



25 ULA



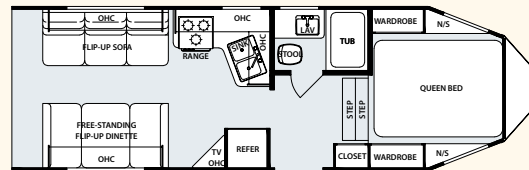
19 UFB



18 ULL



27 UL



Model #	FW/TT	Hitch Weight	Axle Weight	No. AX	Total Trailer	GVWR	Box Length	Total Length	Cargo Cap	Cargo Length (CS/RS)	Water Cap-Gal	Black Gray	Hitch Size
WPT16UL	TT	527	3487	2	4009	7000	16'7"	20'9"	3000	11'7"	80 Gal	38/26	2 5/16"
WPT18ULL	TT	1046	5133	2	6180	9846	18'6"	23'2"	3000	10'6"	80 Gal	38/26	2 5/16"
WPT19UFB	TT	1073	4392	2	5465	9873	19'6"	24'2"	3000	10'5"/13'1"	80 Gal	38/26	2 5/16"
WPT21UL	TT	671	5027	2	5698	9200	21'-6"	26'	3000	9'10"/7'3"	80 Gal	38/38	2 5/16"
WPT23UL	TT	806	5405	2	6210	9200	23'-6"	28'	3000	11'10"/9'3"	80 Gal	38/38	2 5/16"
WPT25UL	TT	1162	5323	2	6385	9200	25'-6"	30'	3000	13'10"/11'3"	80 Gal	38/38	2 5/16"
WPT25ULA	TT	1220	5133	2	6350	9200	25'-6"	30'	3000	10'9"/7'8"	80 Gal	38/38	2 5/16"
WPT27UL	TT	1996	5629	2	7625	10000	29'	29'	3000	10'11"/8'11"	80 Gal	38/38	NA